

WINTER 2024 EDITION

By Bert Denée

Welcome to the Winter edition of Kalmar News.



Whilst the relatively dry weather we have had for this time of year has apparently caused a crisis in the power supply industry, it has been good for progress on our construction sites. We are now well into the structure for the Building 2 at The Foundation Village in Parnell, and similarly the next stage of the Fabric development in Onehunga is now well “out of the ground”. Further details on all of our projects are expounded in the following pages.

With inflation now looking to be coming down to sustainable levels and the OCR heading in the right direction, the construction sector seems to have passed the nadir in the current downturn. Although Kainga Ora have put all their new projects on hold until at least November, at the other end of the market spectrum things remain active. We have recently commenced a new luxury apartment project at 11 York Street in Parnell, with another high-end apartment project due to commence nearby, also in Parnell, for a different client before the end of this year.

Through our partnership in the New Zealand Construction Alliance, we have been engaging with the Callaghan Institute to explore opportunities in the innovation and technology space.

NZCA has now established a framework for capitalising on the work done with Callaghan, and all partners should be seeing the benefits of this work in the near future. At the recent MasterBuilders Constructive conference in Wellington, Bernard Hickey propounded that New Zealand was one of the few places in the world that would actually benefit from the predicted future climate change and become a sought after, relatively civilised and stable refuge in an increasingly unstable world. New Zealand’s population would therefore likely well exceed official predictions of 6 million by 2100 and more likely, at only 1.5% growth per annum, reach 17 to 20 million. His obvious conclusion was that we needed to start building a lot more apartments, and the requisite infrastructure, as soon as possible!

Whether or not Bernard Hickey proves to be correct, Kalmar is in a strong position as we emerge from Adrian Orr’s recession, and we are ready to take advantage of the opportunities that we have in front of us.

<https://www.masterbuilder.org.nz/assets/public/docs/ConstructiveAug152024BernardHickey.pdf>

<https://nzconstruction.net.nz/>

INSIDE THIS ISSUE

Winter Edition 2024

| CONTENTS | PAGE |
|-------------------|------|
| Project Updates | 2 |
| Health & Safety | 16 |
| Kalmar Staff News | 17 |
| Events | 22 |

PROJECT UPDATES

Jimmy's Point, Hobsonville

By Neil Ball

With Winter now behind us, we're thrilled to announce that the construction at Jimmy's Point has reached practical completion.

Our dedicated team has worked tirelessly to ensure a quality delivery throughout the project. We've seen a truly touching response from the purchasers, with one resident moved to tears by the overwhelming beauty and quality of their new home.

As we wrap up this phase, we're focused on finalizing the Code Compliance Certificate (CCC), which is already in progress. With this in motion, settlements are just around the corner.

A special thanks goes to Branden for his leadership throughout the project, and to Gerhard for his close work with the finishing team – Murray, Adam, Tony & Jervis. Their combined efforts, supported by Luca and Yulia on the commercial side, have been instrumental in bringing this project to life.

Talking about life, we extend our heartfelt congratulations to Tony, and his wife Diane Yan, of the recent arrival of their daughter Stephanie, and to Adam and his Maree on the arrival of their son, Ádám. We wish you all the very best for the years to come!

While this project has faced its share of challenges, this milestone stands as a remarkable achievement, reflecting the collaboration of our design team, subcontractors, suppliers, and our client, Winton Partners.

With the final accounts nearly settled, it's time to raise a glass and celebrate the success of Jimmy's Point and send a huge thank you to everyone involved.

Ngā mihi nui

(Thank you with gratitude and congratulations)



PROJECT UPDATES

F-A-B-R-I-C of Spring Street, Onehunga

By Neil Ball

There has been no shortage of activity on Fabric of Spring Street as our 118 residential apartment development moves past the in-ground works phase.

Despite facing various challenges, particularly with Watercare Engineering Plan Approvals (EPA), our dedicated team has been actively overcoming these obstacles.

We're thrilled to announce that we've successfully navigated through the EPA approvals, which has been a significant relief for the project team. This achievement allows us to realign the project sequencing, and with in-ground works now complete, this marks the beginning of the podium construction, initiating the project's vertical ascent.

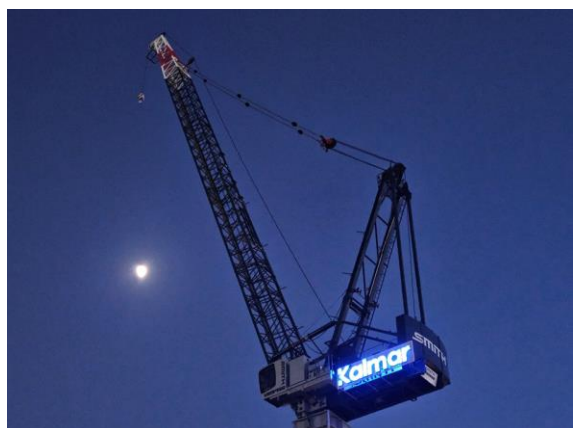
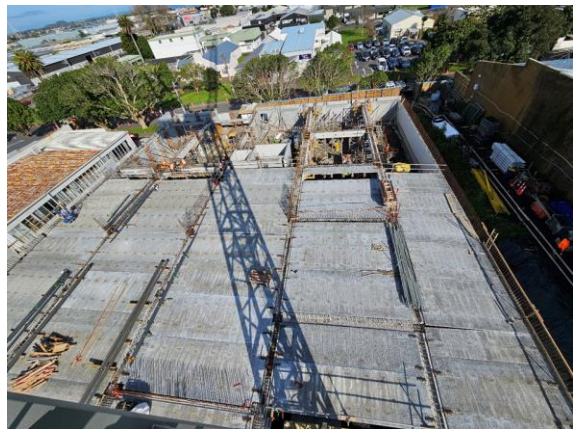
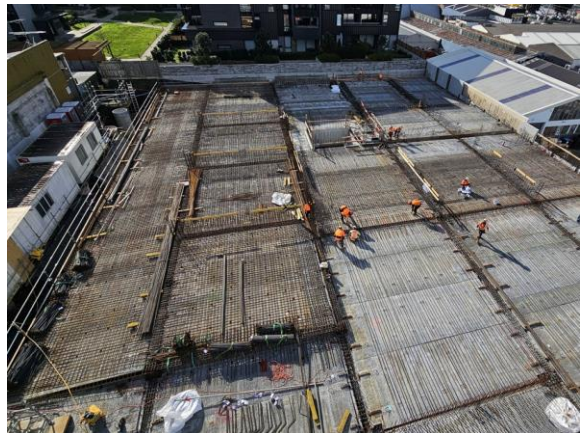
Progress on the overall design and consenting pathways has been positive. Foundation and superstructure consents have already been secured, and the façade and fit out consents are progressing through Council.

Our project team, including Brendon V, Donald, Liam, Thomas L, Samantha (aka Sam), James, Lance, Douw, Paul L, Paul D, Joy, Jerrin and Eric, have been working diligently through these challenges, but maintaining a strong morale and unity.

They have balanced hard work with social activities, enjoying team lunches, bowling events and evening dinners, all of which have strengthened their camaraderie and team spirit.

With steady progress and vertical construction now underway, we're excited about the continued momentum and look forward to the next phase of this exciting project.

Kia mau ki te mahi pai
(Keep up the good work)



York House, Parnell

By Neil Ball

Working closely with our client, Precinct Properties, Icon Developments and the design team through an Early Contractor Involvement (ECI) process, we are pleased to announce that the York House development is finally under construction.

This marks an important milestone, and we are excited to start construction on this development located in the heart of Parnell.

York House is a boutique collection of 44 high-end residences. Spread across six levels, these apartments offer a perfect blend of modern luxury and timeless elegance, with stunning sea views across the city towards the Harbour Bridge. The development also includes two levels of basement parking.

With Dillon Taylor back from his honeymoon, he will lead the team in delivering this project, supported by Gerhard, who will manage the onsite aspects of the build. Paul L and Harold will oversee the design elements, while Olivia, Samuel and Michael are driving the upfront procurement to keep us on schedule. The team is excited about moving into their new offices just across the road and are already planning where to place the pool table to bring out their competitive spirit!

Demolition works have commenced onsite, with Traffic Management Plans (TMP) in place to support the long-term construction methodology. After the demolition phase, we will begin piling works to complete the perimeter retaining, followed by bulk excavation – taking advantage of the drier months ahead.

We look forward to diving into this project and will keep you update with our progress.

Kia haere tatou
(Let's Go!)



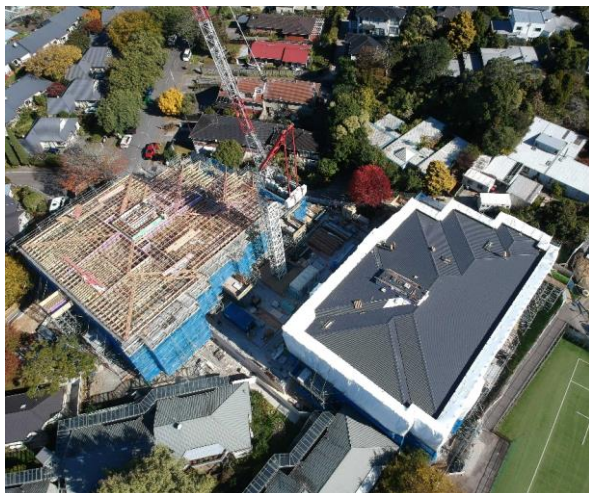
Remuera Gardens, Remuera

By Inna Goodwin

Remuera Gardens is advancing well with the structure completed at the end of March, and the fit-out progressing over the last few months. .

Both buildings now have roofs and are shrink wrapped, and the façade work is coming along nicely.

Our site is buzzing with activity, with an army of workers focusing on first fix and progressing well with linings.



There has been a significant change within the Remuera Gardens team. We bid farewell to our structures team: Arona Pere, Lee Savage, Neil Campbell, and Douw van der Walt, who have moved on to exciting new projects. We're grateful for their contributions to the project.

Dylan Fourie, Bernard Tan, and Edmund Changwai have joined us to supervise the fit-out, with Arthur Yan supervising the façade.

Gene Larsen receives a special mention, having retired in April. There was a great turnout at his retirement function, and his last day was celebrated on site with morning tea and a final speech. Gene is enjoying a leisurely life in New Plymouth.



Remuera Gardens, Remuera continued

By Inna Goodwin

Remuera Gardens is advancing well with the structure completed at the end of March, and the fit-out progressing over the last few months.

We also had a few team members enjoy a well-deserved break. Ross Duxfield enjoyed an epic holiday in America and Canada, while Derrick Morby soaked up the sun in Bali. Harrison Chapman is planning to “hit the surf” in Bali too.

We’ve had some fantastic social events recently, including a team dinner at Ramen Takara Ponsonby, where a number of mojitos were consumed!

In April, we celebrated our new team members with Friday drinks at the local pub, and for the King’s Birthday, we indulged in some mouth-watering lo-and-slow BBQ from Morepork – a definite hit!



Park Green Neighbourhood Centre, Hingaia

By Craig Mullane

Park Green is a retail development for the Hugh Green Group. The Site includes a café, some single storey base build retail units and an Early Childhood Education Centre (ECE). Also included is a substantial external works package.

Contract Completion is currently the 27th of November 2024, but we are aiming to get PC by the end of October 2024.

The café structure is complete, the roof is, RAB and Wrapshield are on with joinery in place. The cladding is underway along with insulation and 1st fix services. Retail Steel structure is complete, timber external walls, gutters & canopies are all on going with and RAB board now underway. The ECE Steel Structure is complete, block wall erected and Timber Frame now underway.

The site team includes Alan Watson as Site Manager, Lee Savage as Site Supervisor and Mikhail Filatov, our Quantity Surveyor looking after the financial aspects of the project. Vincent Escalante, who was looking after the concrete pours, has now moved onto The Foundation – Building 2, with Shane following shortly after. We'd like to thank both Shane and Vincent for their efforts at Park Green Neighbourhood Centre

The site was fortunate to have some general awareness training from the Mates in Construction team recently, with over 50 people attending!



Proxima Residences, Newton

By Phil Williams

Proxima obtained Practical Completion for Separable Portion 1, Ground Floor to Level 8 and Building A on the 10th of May 2024. This was achieved due to the dedicated input of the whole project team, client and consultants who focused on delivering on the completion date.

The building has made quite a statement on the existing landscape in Eden Terrace, but with its sleek facade elements it fits in seamlessly with the fabric of the neighbourhood.

The remaining works comprise of four penthouse units on Level 9 that are on target to be completed by July 2024. The penthouses are progressing well with finishing lines, decorations and second fix services underway in all four apartments. The specification of finish is bespoke, with material selection and details creating an architectural elegance that goes hand in hand with the stunning views across the CBD, Mount Eden and the Waitakere's visible from the balconies that are a feature statement of the building.

Pedro Silveira is managing the fit-out, working closely with the design team, Vanessa Tam (client) and her family to ensure the high level of detail and finish is to their expectation. This has posed a series of challenges, with added attention to detail required to ensure the tight tolerances and visual appearances is achieved.

Works progressed to date include laminate flooring, bathroom tiling and the installation of the sauna and steam shower. The significant cabinetry works are also complete and await the installation of the natural stone bench tops before the high-end appliance's are fitted.

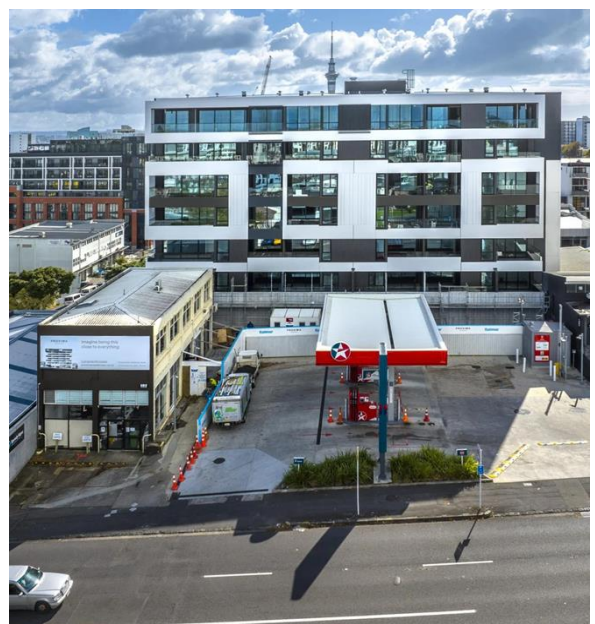
The architectural defects are being closed out along with the purchaser pre-settlement inspections and any defects that may arise from this process. This process is being managed by Jason Underhay with his extensive carpentry knowledge, who is still onsite supporting Pedro. The remainder of the team has undergone further changes with Isaac Faálogo joining Thomas van Roekel and Pierre Gonzales to assist with closing out variations and final accounts with the sub-contractors.

On the delivery side Domingo Espinoza, Shane Punter, Bernard Tam and Marc Barton have moved to their next projects while Rafiq Sheikh and Jessica Brewitt have left to explore opportunities overseas. Paul Dine has overseen the Health & Safety on the project ensuring a high standard has been maintained.

A site visit was held to view the completed and in progress works, followed by Vanessa taking the team to the local ale house Galbraith's to celebrate over a couple of drinks. The team also celebrated over lunch at a local restaurant, Azabu in Ponsonby, when Practical Completion was achieved.

Thank you all for your efforts on the project. We wish you every success on your next one.

Neil Spencer and Phil Williams



Proxima Residences, Newton continued



Metlifecare Oakridge, Kerikeri

By Phil Williams

Work on site has progressed well over the first half of the year with the building is now completed and in the process of being handed over to Metlifecare for their occupation and use.

Since the last update, a lot of work has taken place on completing the fit-out. These areas now with the architect and client inspections having taken place.

Being a Care Building, there are a lot of services within the building resulting in an extensive commissioning process with many integrated services, and a BMS (Building Management System) to control the system within the building. This was a steep learning curve for the local contractors that we contracted for the service trades. They have all performed as required to have the building operating as designed, and to obtain the necessary sign-offs from the team of consultants. In addition to the consultant's commissioning requirements the Greenstar rating required the involvement of an Independent Commissioning Agent who has overseen and reviewed all commissioning plans, results and witnessing as an added measure on site to ensure the building is operating as per its design.

The project was designed to a Greenstar 6 rating and under Laksh Jaishankar's management through construction, we have achieved compliance with the majority of documents Kalmar is responsible for, already completed. This has involved a lot of work with contractors to ensure the materials they used are compliant with the Greenstar specification. Any deviation or substitution would have resulted in lost credits.

The success of the project can be attributed to the collaboration between all parties, main contractor, client, design team, local subcontractors, and subcontractors who travelled from Auckland. We had our reservations about working outside of Auckland in the regions, but this has proven to be unfounded. Specific mention is made of the local subcontractors' professionalism. They made a significant contribution to ensuring that the project was completed on time.

The team is now starting to move to their next project. Edmund Changwai, Rheinhardt du Toit have returned to Auckland, Laksh Jaishankar and Arthur Yan are in the middle of packing and preparing to leave. The commercial team, Luke Ryan-Lyndon and Raewen Puntanar, supported by Thomas van Roekel have operated remotely from Head Office for the duration of the project and have kept a tight rein on the financials. Raewen recently moved to her new project, and Luke and his partner are heading off on their OE. We wish them well on their adventure.

Greg Bailey kept a keen eye on Health and Safety throughout the duration of the project. His regular H&S trips to site as well as the service he provided as "carrier pigeon" have come to an end. Chocolates from Makana will once again have to be purchased online.

The entire Kalmar team involved in this project has contributed to achieving a great result in delivering a quality project on time, with a very satisfied and appreciative client, Metlifecare.

Thank you all for your effort over the past 18 months. Dillon Taylor and Phil Williams.



Metlifecare Oakridge, Kerikeri continued



The Foundation, Abbott Residences, Parnell

By Nicholas Botha

Construction is in full swing!

Construction on The Foundation Building 2 kicked off with great momentum in early February. Soiltek provided two piling rigs, enabling a swift start that saw all piling completed by late March. Due to the large footprint of the building, the basement was broken up into four zones. This facilitated efficient sequential work and continuity.

Ground conditions have been challenging from the start, with the water table extremely close to the bottom of the footings. Each time it has rained, the team has had to deal with a considerable amount of dewatering. Detailed excavations, under slab drainage, and site concrete for footings and pads are now complete. The tanking system beneath the slab is nearing completion, with preparations underway for final zone foundation pours.



The Foundation, Abbott Residences, Parnell continued

The tower crane stands tall, essential for managing the site's demands, which will soon intensify. One boom pump is operational, with another scheduled for installation in the month of August. In the basement, two of the four slabs have been poured, which has given Mike and the team much needed lay down area for the remaining foundation reinforcing, Peri Gridflex and Peri Trio. The final two basement slab pours are targeted for early and late July.

With achieving milestones, come rewards and the team enjoyed a lamb spit after the first basement slab pour, kindly provided by Mansion Civil. This milestone came hand in hand with Mansion Civil completing the detailed excavation.

Since Zone 1 basement slab pour, Peri Gridflex has been installed for the ground floor post tension slab and the Peri Trio formwork for in-situ walls is well on its way in the first area, which is referred to as Area A. The ground floor is broken up into Area A, B and C, as it has a slightly smaller area than that of the basement slab.

The site office is nearly at capacity and everyone in the team is highly motivated to deliver a quality product for our client, Generus.

Mike van der Walt is leading the charge, closely supported by Zubin Hansotia and Iloa Pauu. Then on the coalface we have Domingo Espinoza, Wehan Oosthuizen, Arona Pere, Laksh Jaishankar, Neil Campbell, Eric Yuan and Vincent Espinoza. Lüder Stock and Nikolai Zakharov are heavily interrogating the design and keeping the consultants on their toes. Vasily Bokun is heading up the QS team, with support from Zander Paulsen, Lev Afon, Georgia Nesbit and Raewen Puntanar. Finally, Nathan Halloran brings his experience to the team, and Paul Dine equips us with the tools to maintain Kalmar Health and Safety standards.

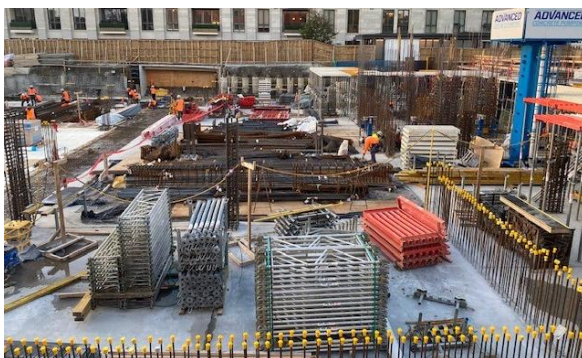
The team is focused and eager to deliver the second Foundation Building in August 2026.



Area 1 - Gridflex install for Ground Floor



Zone 3 - Tanking and Slab Reo



Zone 2 - Slab Poured and Gridflex



Zone 4 - Tanking and Ground Beam Reo

Kensington House, Remuera

By Cameron Nelson

The Interiors team has successfully handed over Stage 1 of Kensington House, which consisted of a complete renovation of the existing care facility.

This phase involved upgrading structural elements and services while providing a modern look and feel through new external cladding, internal layout, and finishes. Impressively, to meet our client's needs, all this was accomplished while half the building remained occupied.

Working in an existing building always proves challenging, but with Donovan Ratner at the helm and a team of excellent subcontractors, we successfully reached the finish line. The camaraderie among our subcontractors has been great, and we celebrated their hard work with a pizza feast during one of our toolbox talks.

Stage 2 recently commenced work, with a completion date of November 2024.



Kalmar Plant Yard, Silverdale

By Tim Ellery

Many of the staff haven't been to the plant yard in Silverdale or know about the two men who run this important part of the business. Stephen Long is our plant manager and Piki Teriti his part time assistant.

Stephen has been based there for a couple of years now, getting gear to and from the sites. About a month ago he was joined by Piki, who works Monday to Friday and as cover for Stephen. Both are locals residing in Orewa.

Until recently, the yard was jam packed full of all our gear. During the quiet period earlier this year it was a good opportunity to carry out extensive maintenance on our falsework and formwork, concrete skips and tools. With the steady increase of work at the Foundation 2 and Fabric 2 projects the materials in the yard have been getting distributed and freeing up some space. Soon to start York House will wipe out a lot of remaining gear and it won't be until next year before it starts coming back. Somehow the sites find out about "free" space and it quickly gets filled with items such as precast, structural steel, sanitary ware etc (by arrangement only).

The yard is a stone's throw away from the Dad's Pies factory. I don't know how you can resist those smells on a daily basis, that's some will power! Stephen and Piki are very accommodating at providing for everyone's needs to ensure the projects flow smoothly and to keep work happening. Thanks, guys, for all you do, it's very much appreciated.



Your Silverdale Plant Yard Team:
Piki Teriti (L) and Stephen Long

Updates from Health and Safety

By Gregory Bailey

Crisis Management Plan – PRACTICE EXERCISE

5th June 2024

A Crisis Management Exercise was carried out at Fabric on Spring to test our Crisis Management Plan. These exercises allow us to identify any areas where improvements and updates to our document need to be made and to ready site teams should such an event require fast and efficient action. Areas of improvement are implemented following each exercise and are tested in the next surprise exercise.

Our scenario played out over a 38-minute period. Here's a heads up to all Kalmar sites to check your roles and responsibilities during a crisis. Identify who is on site to assist you and ensure that you know where the Crisis Management Box is on your site.



**men's
health
week**
TE WIKI HAUORA TĀNE 2024

Men's Health Week runs from 10th June 2024 - 16th June 2024.

An informative email was circulated to all staff that we hope you tapped into. How many of you did the quiz "Know My Score?"

Statistics indicate that many men don't make it to retirement age. We can change these numbers by making small changes in our lives to what we eat, drink and do. We owe it to the people who are important in our lives, those we love, who love us and depend on us. Taking small steps can really make a big difference. Little changes can and do lead to big results.

Graduation



9th April 2024

Inna Goodwin celebrated a significant milestone in April by attending Unitec's Autumn Graduation, having completed her NZ Diploma in Quantity Surveying last year.

After years of hard work balancing her studies with full-time employment, she is immensely proud of her achievements.

Inna is excited to continue her journey in the construction industry and looks forward to contributing her skills and passion to new projects.



New Arrival!



Stephanie

Tony Shi and Diane Yan welcomed their beautiful daughter Stephanie into the world on the 8th of June 2024, a week earlier than expected.

She was born strong and healthy, and is now at home, surrounded by the family, and growing fast.

We have no doubt she will fill your days with sunshine and your heart with love.



New Arrivals!



Peyton

Byron Westcott and his wife, Kerry, welcomed their daughter, Peyton, to the family on the 3 July 2024, at Northshore Hospital.

Big brother Beauden is delighted with his little sister – as you can see!!

Congratulations to the family on Peyton’s arrival



Esme

Congratulations to Rob and Emily La Trobe on the arrival of their daughter, Esme who made her arrival on 21 August!

Rob & Emily arrived at the hospital at 6.10pm, with Esme arriving 10 minutes later, weighing in at 3.5kg/7.7lbs.

With Esme eager to make a speedy entrance to the world, Rob & Emily were grateful for light traffic and living close to the hospital!



Ádám

Congratulations to Adam and Maree Domok on the arrival of their beautiful boy, Ádám, born on 7 September, weighing in at 3.6kg and measuring 52cm.

Tibor looks every inch the proud big brother!

Welcome to the world, Ádám!



THE BIGGEST LOSER

1st February 2024 to 28th March 2024

20 Participants, 9 Weeks and 180 Weigh ins across three categories.

Congratulations to Donovan Ratner who won the men's category, losing 6.77%, and Samantha Turner who won the women's category, with a 2.09% weight loss. Remuera Gardens had the highest team loss at 24.70 kgs or 3.25% of their total weight.



Ross Duxfield (right) presenting Donovan Ratner with his prize



Brendon Vannan (right) presenting Samantha Turner with her prize

congratulations



A group effort at Remuera Gardens. Manie looks like he's waiting for an archer to shoot the apple on top of his head. I wonder if Gene knew what Neil would look like wearing a banana on his head?

Hot Cross Bun Fun

27th March 2024

In the spirit of Easter, these gorgeous Hot Cross Buns were ordered from BeaBea's Bakery in Westmere, after an earlier quality check by Jocelyn and Linda. They "arrived" promptly at 10am the day before the Biggest Loser final weigh in and there didn't appear to be evidence of anyone holding back!



Gene Larsen – Retirement

18th April 2024

After 22 years with Kalmar, old and new friends, and colleagues gathered for a walk down memory lane with Gene, to reminisce about experiences he probably wanted to forget, and to wish him well in his retirement. We have booked Gene to return as our Santa, so he'll be back!



Congratulations on your New Zealand Citizenship Nicholas

20th May 2024

This is an exciting milestone, and it has been a seven-year journey for Nichola Botha. Kalmar has seen many employees through this process over the years. It has been rewarding to see staff develop and grow into valuable team members.

Nicholas received his Certificate of Citizenship at a ceremony on the 20th of May 2024. For those of you who have been through this process, you will understand how significant it is knowing that you have succeeded in putting down roots and finding a sense of belonging in a country you have chosen to call home.



EVENTS

Family Day at Auckland Zoo

17th March 2024

The Auckland Zoo is always a popular day out.

With a turnout of 128 on the day, it is clear this is a fantastic venue for a family event. We had good weather, and of course the animals were very obliging. There's lots to see and do and catching up with colleagues at the Old Elephant House for lunch is a great way to break up the day.



Kalmar Head Office Hāngī

9th May 2024

On a cold and dark morning, when arriving at the office, Kalmar staff found Breviss Wolfgramm from Wolfgramm Holdings preparing a “modern day” Hāngī. The above-ground oven was set up in the Kalmar visitor parking area. Hāngī is a traditional New Zealand Māori method of cooking food usually using heated rocks buried in a pit oven, called an umu. Kalmar is on a Te Ao Māori journey, to create awareness and share the Māori culture.



EVENTS

Commercial Project Awards, Wellington

24th May 2024

Two Kalmar projects make the finals and go on to win Gold and Silver

Waipapa Marae Maintenance Works – University of Auckland (Education) received a Gold Award and The Foundation – the Nathan Residences (Residential) a Silver Award in their respective categories at the black-tie event in Wellington.

Congratulations to all parties who were involved with these two projects.



NZIQS Conference, Wellington

12th – 14th June 2024

“The NZIQS Conference serves as a nexus for the exchange of cutting-edge insights, methodologies, and best practices that empower quantity surveyors to navigate the challenges of today and anticipate the opportunities of tomorrow.”

The conference is an environment where ideas are shared, and attendees catch up with colleagues and friends who form part of a community that strives to develop and learn. This conference is well attended and one that is anticipated by the commercial team each year.



EVENTS

Property Council New Zealand Rider Levett Bucknall Property Industry Awards for 2024

14th June 2024

Four Kalmar projects nominated in two categories

We are proud to share that two Kalmar projects were nominated in the Multi-Unit Residential Property Award category, Te Uru Apartments Stage 8, Owner/Developer: Fletcher Living and The Onehunga Mall Club, Owner: LCO Municipal Limited, Developer: Precinct Properties Residential Limited.

A further two projects were nominated in the Retirement Living and Aged Care Property Award category, The Foundation – Nathan Residences, Owner: The Foundation Village Partnership, Developer: Generus Living Group Limited & Foundation Properties Limited and The Grove Orewa, Owner/Developer: Palm Grove Partnership.

Both The Foundation, Nathan Residences and The Onehunga Mall Club received Excellence awards in their respective categories.

Our congratulations go to everyone nominated and all subsequent winners.

Pictured below is the Onehunga Mall Club team. From left to right are Freek Taverne, Rob Cunningham, Andrew Lamont, Tim Lamont, Nigel Cooper, Clifford Paul and George Kubicki.



Social Club

By Rob La Trobe

All Blacks vs England on the 13th July.

All Blacks overcame a strong England team with a 24-17 win at the fortress that is Eden Park.



Social Club

By Rob La Trobe

Midwinter Christmas at Alexandra Park, 27 June 2024



Upcoming Events

- Social Cooking Challenge
- Riverhead Tavern Boat Cruise & Lunch
- Waitakere Ranges Walk - Omanawanui Track
- Ferry to Kawau Island - Lunch (Summer)

Lending a Helping Hand

By Brendon Vannan



Growing Mighty Kids – Onehunga Primary School

A call for help from OKE <https://oke.org.nz/working-bees/> went out on behalf of Onehunga Primary School to reinstate their veggie garden after it had been lost to building work they had done. They were looking for financial assistance or volunteers to get their raised beds installed.

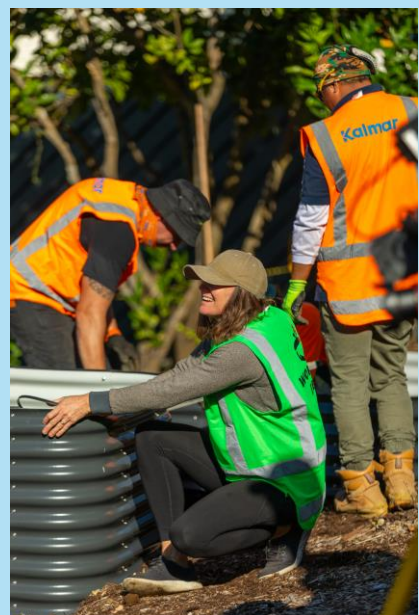
Our Kalmar Concrete team was on site close by, so a few pairs of hands were volunteered to assist in building, digging, filling, planting and moving some dirt around. Feedback from Michelle Turner, OKE Chief Go Getter was that “having Lance Blomfield, along with Laurence Estrada and Arsenio Santos on site was fantastic. They worked so hard, and we could not have had the design outcome for the garden without them and their skills.”

Vicky Holley wrote “I want to pass on a huge thank you from Onehunga Primary School - from our staff, students and whānau for your support with getting our productive garden area up and ready to use. We have a strong sustainability focus as a school. Productive gardening is a big part of this. We had lost our gardens as part of a recent major build project and did not think we would be able to replace them for quite a while due to lack of funds.

A garden like this is usually more of a dream than a reality.

Thank you so much for your part in making it happen for us.”

I’m sure their garden-to-table programme will be exciting for the kids, with lots of messy play while learning.



Procurement Cost Savings

By Bert Dennee

Kalmar currently holds the record

With the introduction of Mutu to the business, it has been important to gain traction with its use and Kalmar has done just that, hitting \$23,800 in procurement cost savings on the platform. Kalmar now holds the record for paying back a year's subscription on Mutu within 48 days!

As an incentive, prizes are issued by Mutu, to the best users of Mutu at organisations to help further drive adoption of the tool. Kalmar's leaderboard identified Lance Blomfield as a clear winner, and he received the June 2024 award for redirecting 835 kgs worth of material from landfill. Mutu planted a tree in Lance's name, and he was presented with a certificate and a voucher for his efforts.

A typical prize pack is a \$50 supermarket voucher, a native tree planted in the best user's name and a certificate showing the impact they have achieved. Mutu then promotes the winner on their social channels.



Kalmar's star of the small screen!

Back in July, Seven Sharp did a piece on the start-up of MUTU, focusing on how construction waste is being re-purposed at one particular farm that was devastated by the cyclones.

As part of the piece, our very own Iloa Pauu was interviewed about how Kalmar uses MUTU to share products, reduce the amount of waste to go to landfill and contribute to surrounding communities.

You can watch the interview here.....Iloa makes his appearance at 2:06!

<https://www.tvnz.co.nz/shows/seven-sharp/clips/how-construction-waste-is-being-re-purposed-on-kiwi-farms>

